

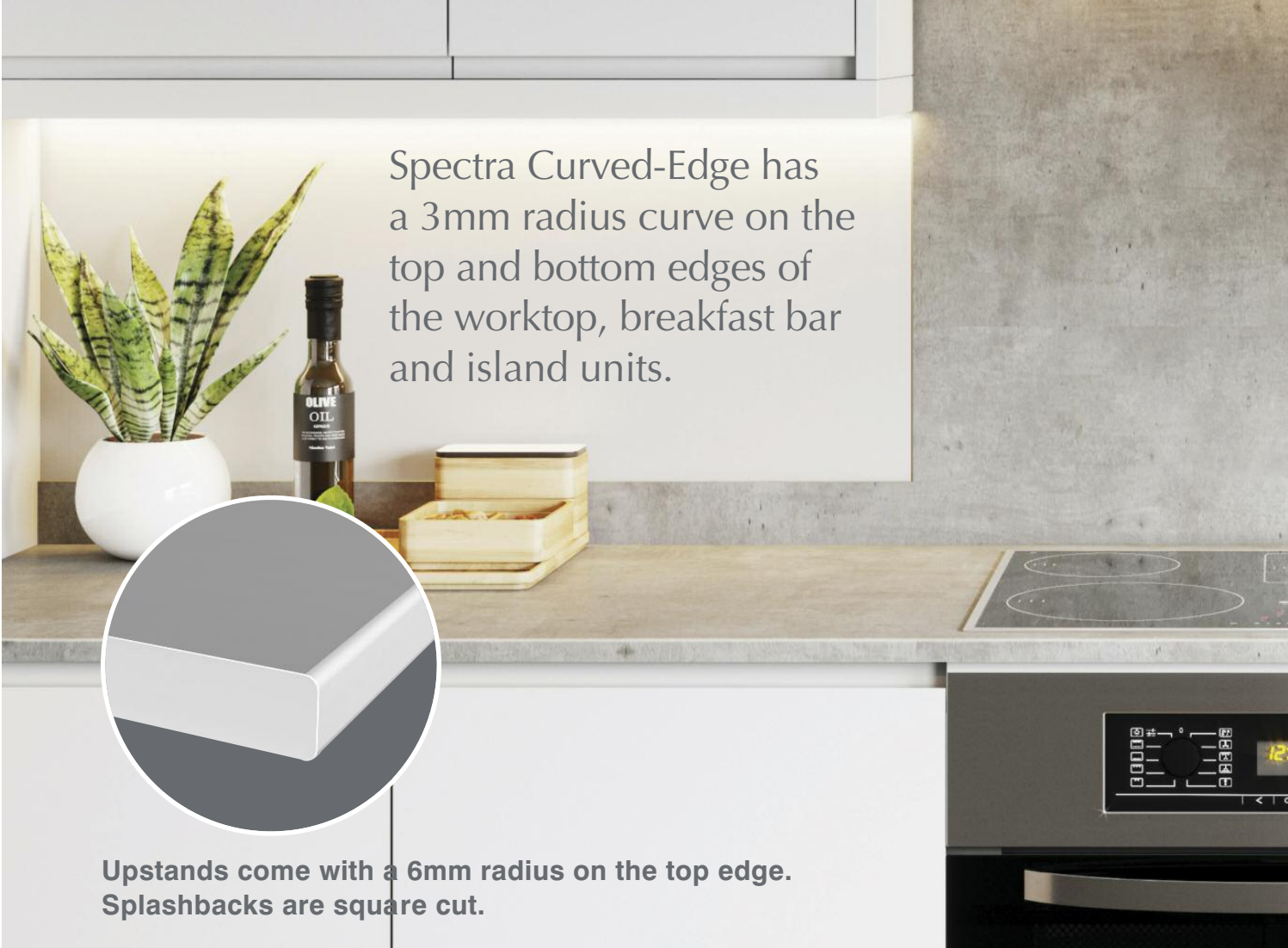


spectra[®]
collection



Curved-Edge

Contemporary laminate surfaces



Spectra Curved-Edge has a 3mm radius curve on the top and bottom edges of the worktop, breakfast bar and island units.



Upstands come with a 6mm radius on the top edge. Splashbacks are square cut.



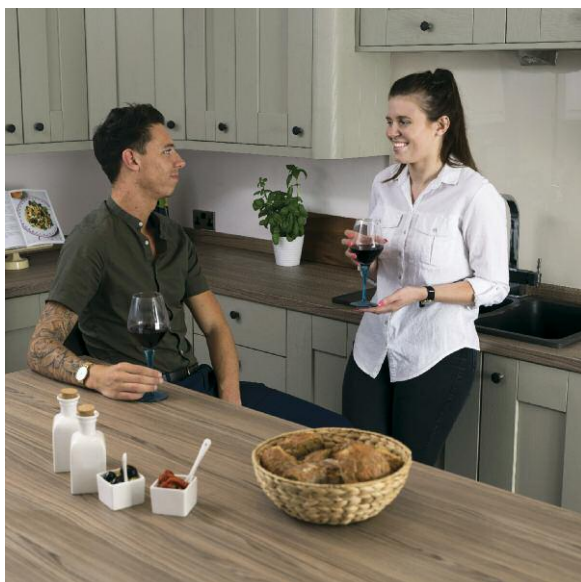
Great choice

What will it be? Wood or stone, Classic or abstract? All Spectra Curved-Edge surfaces are available with a collection of 40 stunning décors to choose from.



Hygienic design

All Spectra Curved-Edge surfaces are made of durable moisture resistant materials that have fewer joints meaning there are less places where dirt can get trapped. Therefore they are easy to keep clean, making them extremely hygienic.



Safe Surfaces

Designed for maximum safety, Spectra Curved-Edge has fewer sharp edges to cause painful bumps for young children running around the kitchen.

Award-winning quality

All the timber used in the production of the Spectra Curved-Edge Collection comes from well-managed and sustainable forests. They also achieve the ultimate mark of quality – the FIRA Gold Award. See pages 16-17 for more details.

GREY
SHUTTERED
CONCRETE
(WORKTOPS)
(WOOD)

COLMAR
OAK
(ISLAND UNIT)
(WOOD)



1

2

3

4



We know a great deal of thought has to go into designing your perfect kitchen. From the choice of cabinets and flooring, to the style of sink and tap, it's important everything fits together and colour matches perfectly.

With this in mind, we've developed Spectra Curved-Edge so it can be used in a number of versatile ways within your kitchen.

1. Worktops

Sinks, drainers, taps and hobs can all be fitted into the worktop, whilst ovens, dishwashers and other appliances can be fitted below. As worktops take up the biggest surface area in your kitchen, you need to be sure you have the right colour choice. That's why 40 décors are available for you to choose from.

See pages 6-9 for more details.

2. Breakfast bar and island units

Available in both 665mm and 900mm widths, these are often the social hub of the kitchen and the surface where most food is prepared. They are available in all of the 40 Spectra Curved-Edge décors.

Why not use a contrasting décor for your island unit as we have done in this image.

See pages 10-13 for more details.

3. Upstands

Easy to install and maintain, upstands are a very cost-effective way of protecting your walls from impact and splashes.

They are available in all of the 40 Spectra Curved Edge décors.

See pages 14-15 for more details.

4. Splashbacks

A cost effective and easy to clean alternative to traditional tiles, without any unsightly grout lines. Because they are available in all of the 40 Spectra Curved-Edge décors, splashbacks can create a stylishly seamless look with an identical décor and texture to your worktops and upstands. Splashbacks can also be used as a distinctive feature wall either in your kitchen or anywhere else in your home.

See pages 14-15 for more details.



GREY
LIGHTNING
STONE
(MATT)



Beautifully tough Worktops

spectraworksurfaces.co.uk

Worktops used in the kitchen or utility room need to be versatile.

They have to be hard wearing yet look great.

They must also accommodate hobs and drainers from above, while enabling ovens, dishwashers and other appliances to work uninterrupted below.

It's why all Spectra Curved-Edge surfaces are made of hygienic, durable materials that work perfectly with everything in your kitchen and utility room.

A choice of 40 stylish décors and 6 textures are available including dazzling stones, realistic woods and original abstract designs.

Each worktop has one long curved edge to give seamless protection.

Worktop dimensions:

3600 x 600 x 40mm

1800 x 600 x 40mm





A kitchen ready for action

This Spectra Curved-Edge worktop, full height splashback and upstands are all using the décor Snow Spark Quartz.

The worktop has a induction hob installed seamlessly within its surface.

The height of the extractor above the hob complies with the minimum height fire safety requirement of 750mm. It is good practice to use a worktop saver when moving a pan straight from the hob to the worktop or when chopping food ingredients.

spectra
collection



Curved-Edge
Contemporary laminate surfaces



Sociable surfaces

Breakfast Bars and Island Units

spectraworksurfaces.co.uk

With the addition of a Spectra Curved-Edge breakfast bar or island unit, you will be creating a social hub in your kitchen.

You'll have more room to prepare food, share meals and simply relax with friends and family.

Available in the same 40 décors and 6 textures as all the other Spectra Curved-Edge surfaces.

The two long edges of the breakfast bars and island units have smooth curved edges to give a seamless look and to reduce the risk of young children hurting themselves by running into a sharp edge.

And thanks to the choice of dimensions available, wasteful offcuts and joints are kept to a minimum.

Breakfast bar and island unit dimensions:

3600 x 665 x 40mm

1800 x 665 x 40mm

3600 x 900 x 40mm

1800 x 900 x 40mm



CYPRESS
CINNAMON
(WOOD)





SAND
SPARK
(QUARTZ)



A modern space to enjoy

The breakfast bar in this image has a contrasting solid wood division and tray dividing two 600mm wide surfaces.

In the foreground there is space to sit and enjoy a meal and a drink.

On the far side, an induction hob has been installed within the breakfast bar with space to prepare food.

spectra
collection



Curved-Edge
Contemporary laminate surfaces



WILD
RUSTIC OAK
(WOOD)



This kitchen design has used both upstands and splashbacks.

The upstands have been installed successfully in combination with ceramic tiles around the window.

Meanwhile the splashback seamlessly fits around the wall cabinets, extractor and worktop. This provides an attractive, easy to clean wall surface in the area around the hob, which can potentially suffer from cooking splashes.



Wall protection

Splashbacks and upstands

spectraworksurfaces.co.uk

Splashbacks and upstands share the same 40 décors and 6 textures that are used by the worktops, island units and breakfast bars. They deliver an easy to clean, beautiful and cost-effective protection for your walls.

Splashbacks

An increasingly popular alternative to tiles because splashbacks don't have unsightly and unhygienic grouted joints and they are far less expensive to install.

Each splashback is delivered with square cut edges. This is because splashbacks are usually installed up to the edges of your walls, worktops and cabinets, so they do not need curved edges.

Upstands

Featuring a curved top edge, Spectra Curved-Edge upstands provide a seamlessly hygienic barrier between the wall and the worktop.

Splashback dimensions:

3000 x 1210 x 8mm

Upstand dimensions:

3600 x 100 x 18mm

Tried and trusted

Award-winning quality

spectraworksurfaces.co.uk

All Spectra Curved-Edge products undergo a number of rigorous tests to ensure each worktop, breakfast bar, island unit, upstand and splashback not only provides great decorative style, but also delivers superior performance against heat, water, abrasion and impact resistance*.



When it comes to checking quality, we're unapologetically exacting. It's why you'll never see us cutting corners or taking the easy option.

Instead you'll find us carrying out test after test to ensure all our surfaces are of the highest standard. It's an approach that has led to Spectra Curved-Edge achieving the ultimate mark of quality – the FIRA Gold Award.

* Whilst Spectra Curved-Edge offers additional performance over other work surfaces, standard work surface precautions such as heat protectors and chopping boards should still be used.

GREY
BRITISH OAK
(WOOD)

Designed for the future

Sustainability

Naturally, all the timber used in the production of Spectra Curved-Edge worktops, breakfast bars, island units, upstands and splashbacks comes from well-managed and sustainable forests.

These are certified in accordance with the rules of the Forest Stewardship Council® and the Programme for the Endorsement of Forest Certification. What's more, thanks to our impressively realistic wood grain effects and textures it's unnecessary to cut down exotic species of timber within precious forests, or disrupt the earth by mining for granite and marble.



A touch of class

Authentic textures

spectraworks-surfaces.co.uk

Here is a description of each of our six distinctive textures. On our swatch pages each décor is listed with its texture to help you choose.

Quartz[†]

A gloss surface with multi-coloured metallic elements freely distributed within the décor to give a dazzling visual effect.

Matt

Used with some of our marble and wood décors, this delicate texture provides a natural look and feel.

Satin

This hard-wearing finish gives a semi-polished sheen that enhances the colour of the décor.

Wood

The natural grain of real wood is subtly and ingeniously replicated in this texture.

Stone

Easy to clean and maintain, the non-reflective and subtle undulations of this texture looks and feels great.

Glaze

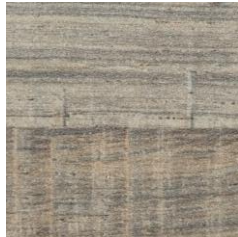
A stunning effect that combines subtle surface undulations with gloss and matt finishes.

[†]**Please Note:** Quartz textured surfaces are more susceptible to scratches than other textures. So please take additional care when handling and cleaning Quartz textured surfaces.

Wood
Décors
>



Scandinavian Oak



Warm Grey American Oak



Cotswold Oak



Cypress Cinnamon



Wild Rustic Oak



Colmar Oak



Vintage American Oak



Grey British Oak

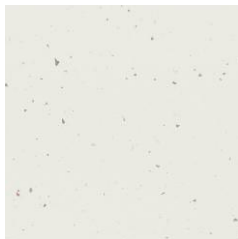


Weathered Pine

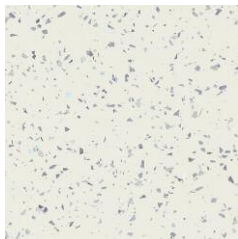


Grey Shuttered Concrete

Quartz
Décors
>



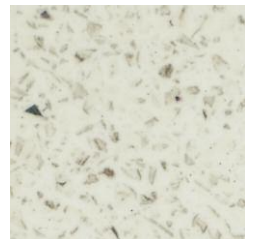
Andromeda White



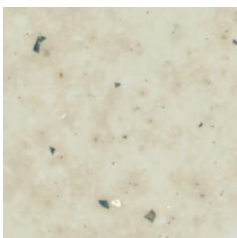
Snow Spark



Andromeda Ice



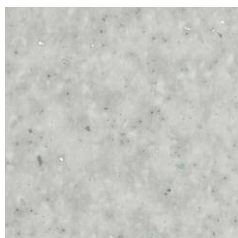
White Terrazzo



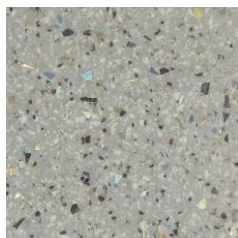
Andromeda Cream



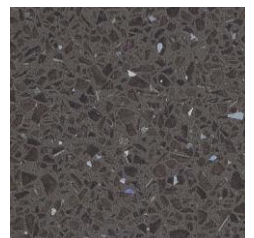
Sand Spark



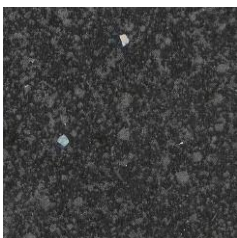
Andromeda Cloud



Grey Peppered Spark



Stone Spark



New Andromeda Smoke



Black Spark



Andromeda Black

Swatch sample scale is 1:2

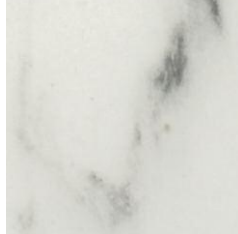
Please also take a look at the handy sample décor swatches on the following pages, to find your perfect worktop décor.



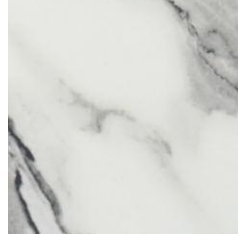
Matt
Décors
>



Carrera Marble



Italian Marble



Tuscany Marble



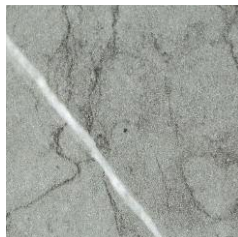
Grey Lightning Stone



Weathered Slate



Winter Emperor



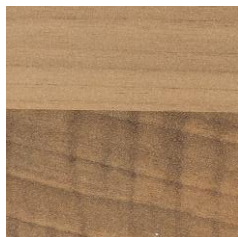
Lombardy Marble



Taurus Beige



Sunset Concrete



Blocked Oak



Autumn Emperor



Copper Stone



Dark Concrete

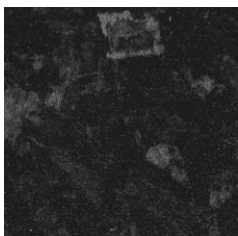


Cornish Slate



Black Lightning Marble

Satin
Décors
>



Black Slate

Stone
Décors
>



Pure Concrete

Glaze
Décors
>



New Lunar Night



Spectra Curved-Edge Décor options

spectraworksurfaces.co.uk

Spectra Curved-Edge

Product availability

spectraworksurfaces.co.uk

Décor Name	Texture	Price Band	Spectra Seal	Worktops		Breakfast Bars and Island Units				Upstands	Splashbacks
				3600 x 600 x 40mm	1800 x 600 x 40mm	3600 x 665 x 40mm	1800 x 665 x 40mm	3600 x 900 x 40mm	1800 x 900 x 40mm		
Andromeda Black	Quartz	B	Black	•	•	•	•	•	•	•	•
Andromeda Cloud	Quartz	B	Grey	•	•	•	•	•	•	•	•
Andromeda Cream	Quartz	B	Soft White	•	•	•	•	•	•	•	•
Andromeda Ice	Quartz	B	Valenza	•	•	•	•	•	•	•	•
Andromeda White	Quartz	B	White	•	•	•	•	•	•	•	•
Autumn Emperador	Matt	A	Earth Dust	•	•	•	•	•	•	•	•
Black Lightning Marble	Matt	A	Black Granite	•	•	•	•	•	•	•	•
Black Slate	Satin	A	Black	•	•	•	•	•	•	•	•
Black Spark	Quartz	B	Black	•	•	•	•	•	•	•	•
Blocked Oak	Matt	A	Oak Woodmix	•	•	•	•	•	•	•	•
Carrera Marble	Matt	A	Valenza	•	•	•	•	•	•	•	•
Colmar Oak	Wood	A	Oak Woodmix	•	•	•	•	•	•	•	•
Copper Stone	Matt	A	Fossil Grey	•	•	•	•	•	•	•	•
Cornish Slate	Matt	A	Black Granite	•	•	•	•	•	•	•	•
Cotswold Oak	Wood	A	Light Oak	•	•	•	•	•	•	•	•
Cypress Cinnamon	Wood	A	Light Oak	•	•	•	•	•	•	•	•
Dark Concrete	Matt	A	Dark Carbon	•	•	•	•	•	•	•	•
Grey British Oak	Wood	A	Light Grey	•	•	•	•	•	•	•	•
Grey Lightning Stone	Matt	A	Grey	•	•	•	•	•	•	•	•
Grey Peppered Spark	Quartz	B	Light Grey	•	•	•	•	•	•	•	•
Grey Shuttered Concrete	Wood	A	Light Grey	•	•	•	•	•	•	•	•
Italian Marble	Matt	A	Valenza	•	•	•	•	•	•	•	•
Lombardy Marble	Matt	A	Light Grey	•	•	•	•	•	•	•	•
New Andromeda Smoke	Quartz	B	Black Granite	•	•	•	•	•	•	•	•
New Lunar Night	Glaze	B	Dark Carbon	•	•	•	•	•	•	•	•
Pure Concrete	Stone	A	Grey	•	•	•	•	•	•	•	•
Sand Spark	Quartz	B	Timberwolf	•	•	•	•	•	•	•	•
Scandinavian Oak	Wood	A	Timberwolf	•	•	•	•	•	•	•	•
Snow Spark	Quartz	B	White	•	•	•	•	•	•	•	•
Stone Spark	Quartz	B	Slate	•	•	•	•	•	•	•	•
Sunset Concrete	Matt	A	Light Grey	•	•	•	•	•	•	•	•
Taurus Beige	Matt	A	Light Oak	•	•	•	•	•	•	•	•
Tuscany Marble	Matt	A	Valenza	•	•	•	•	•	•	•	•
Vintage American Oak	Wood	A	Dark Oak	•	•	•	•	•	•	•	•
Warm Grey American Oak	Wood	A	Dark Oak	•	•	•	•	•	•	•	•
Weathered Pine	Wood	A	Earth Dust	•	•	•	•	•	•	•	•
Weathered Slate	Matt	A	Grey Oak	•	•	•	•	•	•	•	•
White Terrazzo	Quartz	B	Valenza	•	•	•	•	•	•	•	•
Wild Rustic Oak	Wood	A	Dark Oak	•	•	•	•	•	•	•	•
Winter Emperador	Matt	A	Grey	•	•	•	•	•	•	•	•

Please Note: We have price bands A and B, where A is the lowest price and B is the highest price. This is due to different levels of décor and texture sophistication.

The décor shown on this page is Andromeda White. The décor shown on the front cover is Tuscany Marble for the worktop and splashback.



spectraworksurfaces.co.uk

For sales and technical information please call 0121 561 4245
or contact your local Spectra laminate work surface retailer.

spectra 
collection

Curved-Edge
Contemporary laminate surfaces

Whilst every effort has been made to accurately represent the Spectra colours and textures, we are unable to guarantee an exact match due to the limitations of the brochure printing process. E&OE. We reserve the right to amend specifications of products without notice. All dimensions are nominal.


Made in Britain