



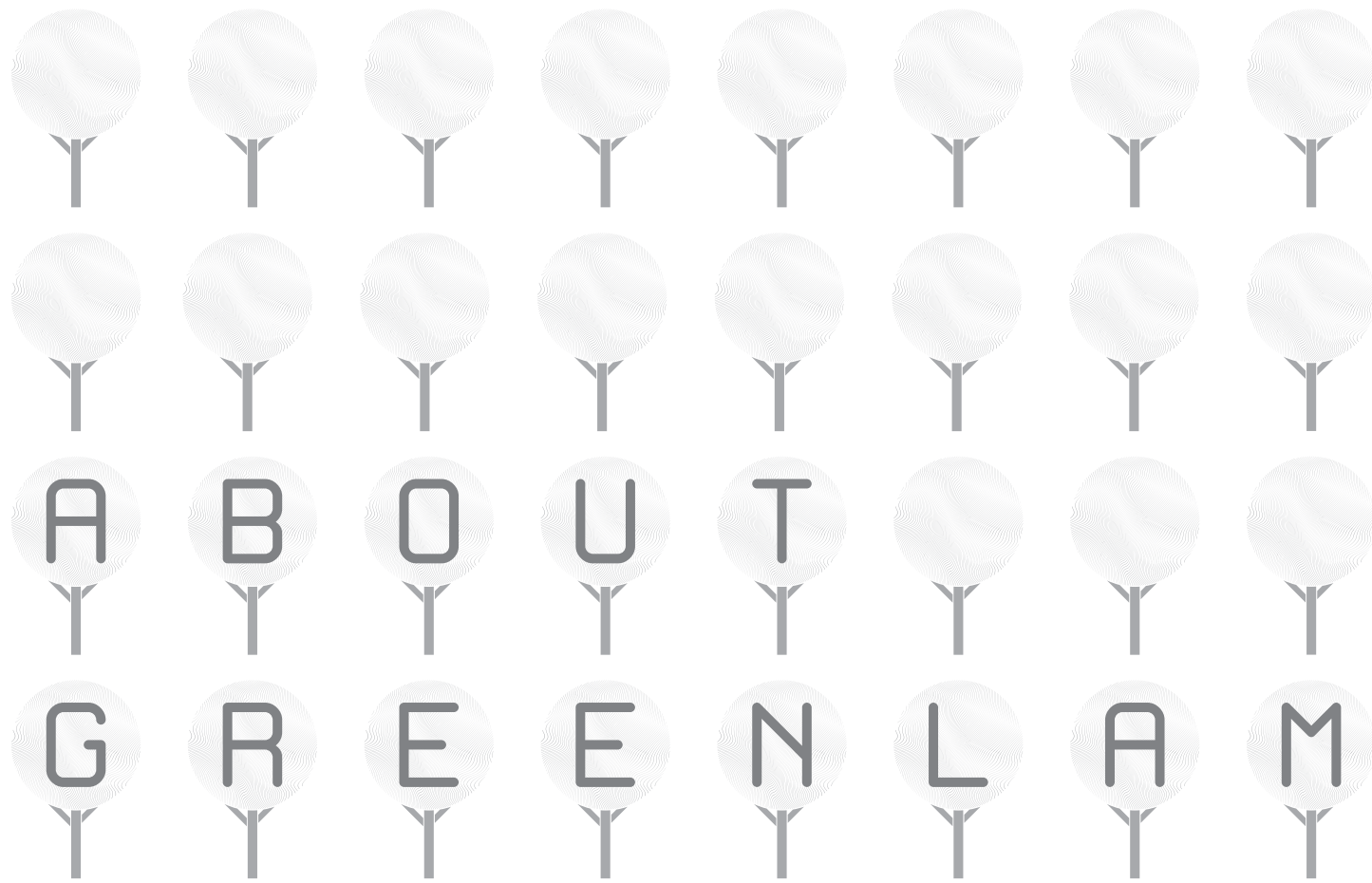
Greenlam
LAMINATES



STRATUS

KITCHEN SURFACE SOLUTIONS

Featured Worktop & Breakfast Bar - 5574 Statuario - Texture Salm
Upstand: 5578 Madison - Texture Terra
Splashback: 5577 Houston - Texture Suede



Every artist needs a canvas. For Greenlam, every home is one. Greenlam takes pride in being the pioneer of trends in surface solutions across the globe. With two state-of-the-art manufacturing facilities, Greenlam Laminates stands tall as among the top 3 manufacturers in the world, with a combined output in excess of 44.56 million square meter per annum, Greenlam's broad range of products are widely specified.

Greenlam products are evidence of its commitment towards exceptional artistry, innovation, unsurpassed quality and unyielding passion for excellence. A team of 4000 employees and a network of over 12,000 partners in over 100 countries ensures that our beautiful designs reach architects, interior designers, and end consumers who demand newness in their spaces. They are the ones who truly inspire us to innovate and ideate towards delivering the best.

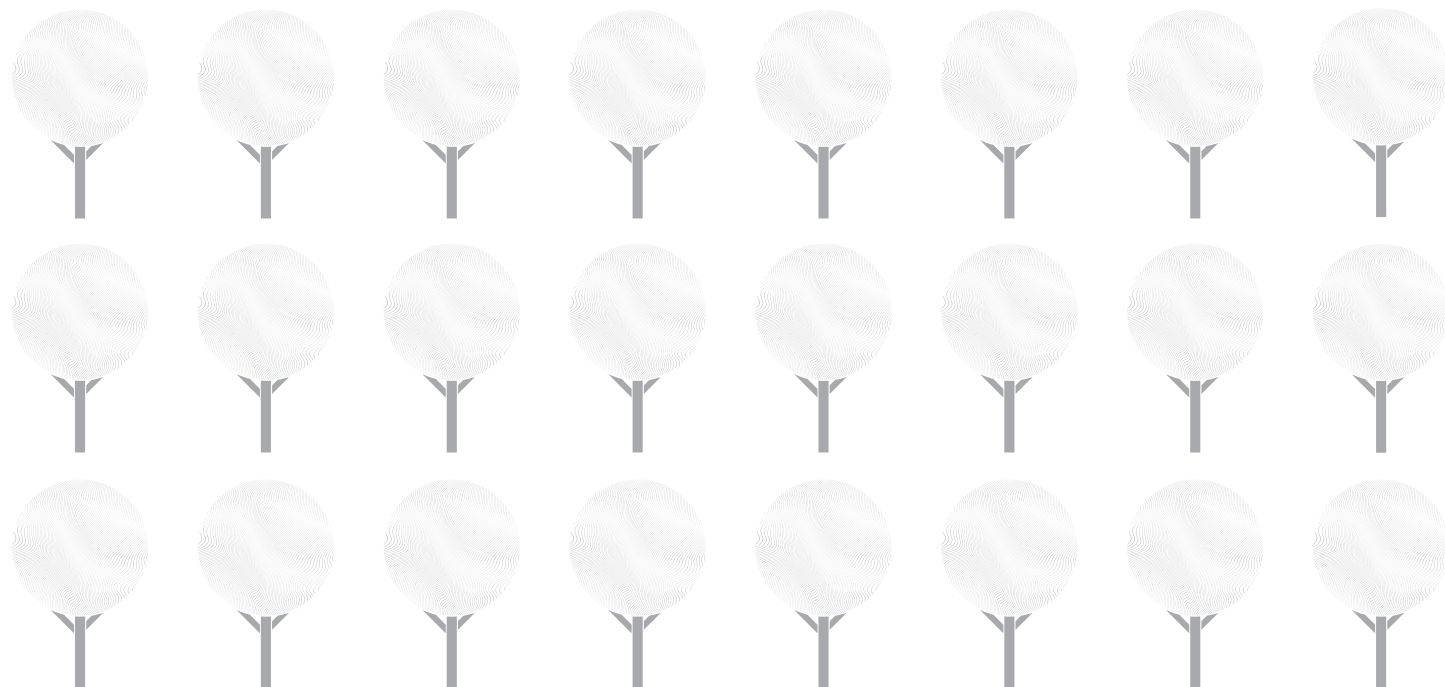


TABLE OF CONTENTS

ELEMENTS OF ELEGANCE	01
WORKTOPS	03
AFX ANTI-FINGERPRINT WORKTOPS	05
BREAKFAST BARS	07
UPSTANDS	09
SPLASHBACKS	11
CORES	13
DECORS & TEXTURES	14
TECHNICAL SPECIFICATIONS	15
CERTIFICATIONS	16





ABRASION
RESISTANT



SELF
SUPPORTING
(12MM)



MOISTURE
RESISTANT



HEAT
RESISTANT



SUSTAINABLE



FIRE
RESISTANT



HIGH WEAR
RESISTANCE



EASY TO
MAINTAIN



IMPACT
RESISTANT



SAFE CONTACT
WITH FOOD



MACHINABLE
THROUGH
ITS THICKNESS



AIR QUALITY
GREENGUARD
CERTIFIED



EASY TO
FABRICATE



BEAUTIFUL
TEXTURES



TEMPERATURE
NEUTRAL



ANTI-BACTERIAL



COMPLETE SURFACE SOLUTIONS FOR YOUR KITCHEN

Greenlam brings to you a way to turn your kitchen into a piece of art. Presenting Stratus Kitchen Surface Solutions, a co-ordinated range including breakfast bars, worktops, splashbacks, and upstands. A perfect blend of style, utility, and durability, these temperature-neutral and easy-to-install kitchen surfaces bring your kitchen alive through countless textures and designs.

WORKTOPS

SLIMLINE & DURABLE. As design trends have developed to thinner worktops, the Stratus range of 12mm compact worktops takes the design solutions available to a whole new level. These durable, modern designs with a range of textures, offer sleek lines combined with a high level of performance in demanding kitchen environments.

Size - 3050x615mm | Thickness -12mm | Core - White, Black | Texture - Essentia, Terra, Satin, Suede



AFX: ANTI-FINGERPRINT

INNOVATIVE SURFACE FINISHES. Specially treated, the Stratus AFX worktop collection boasts a unique surface performance that's super matt, non-porous, and hydro-repellent, making it effortless to clean away fingerprints, impurities and grease marks. These features combine to make the AFX collection an impressive addition to any kitchen.



Anti-Fingerprint



Soft Touch



Scratch Resistant



Food-contact Suitable



Mould Resistant



Matt Surface with Low Light Reflection



Hygienic



Hydro Repellent



BREAKFAST BARS

A DESIGN MASTERPIECE FOR ANY SPACE. The Stratus range includes a breakfast bar module. This can be easily adapted to your space requirements. Sinks and cookers can be readily incorporated to suit any design layout.

Size - 3050x900mm | Thickness - 12mm | Core - White, Black | Texture - Essentia, Terra, Satin, Suede



Featured Lower Cabinets and Paneling in 5575 Black Marmor

UPSTANDS

THE PERFECT DRESSING. Stratus range of 12mm thick upstands allow you to match or effectively contrast your chosen worktop. A modern and smart alternative to tiles, these upstands are easily installed and stand up against food and water stains, to complement your worktops in the most seamless way.

Size - 3050x95mm | Thickness - 12mm | Core - White, Black | Texture - Essentia, Terra, Satin, Suede



Featured Worktop, Upstand & Lower Cabinets in 5577 Houston
Featured Splashback in 5578 Madison



SPLASHBACKS

THE ART OF WALL DRESSING. The Stratus Collection includes a range of matching or contrasting Splashbacks available with a 9mm HDF core to provide an effective wall finish whilst allowing matching or contrasting design solutions. These compelling alternatives to traditional tiles are durable and easy to install.

Size - 3050x600mm | Thickness - 9mm | Texture - Essentia, Terra, Satin, Suede



Featured Splashback in 9853 (AFX) Anthracite



THE STRATUS COLLECTION

AVAILABILITY - CORES | SIZES

CORES



WHITE CORE*



BLACK CORE

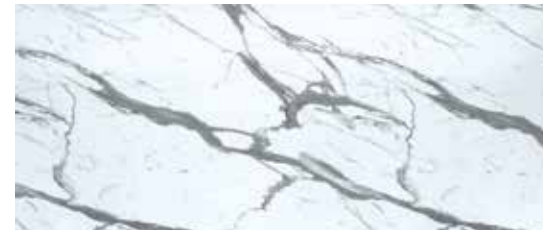
SIZES

WORKTOPS
THICKNESS - 12mm
SHEET SIZE - 3050 x 615mm
BREAKFAST BARS
THICKNESS - 12mm
SHEET SIZE - 3050 x 900mm
UPSTANDS
THICKNESS - 12mm
SHEET SIZE - 3050 x 95mm
SPLASHBACKS
THICKNESS - 9mm
SHEET SIZE - 3050 x 600mm

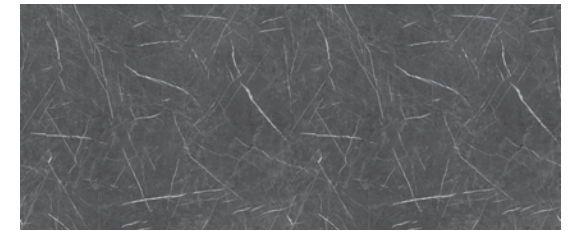
*Only available with 5574 Statuario and 9851 WhiteX

DÉCORS AND TEXTURES

WOODGRAINS STONES & CONCRETES



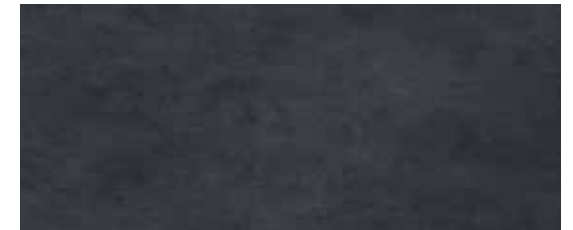
5574 • Statuario (Satin)



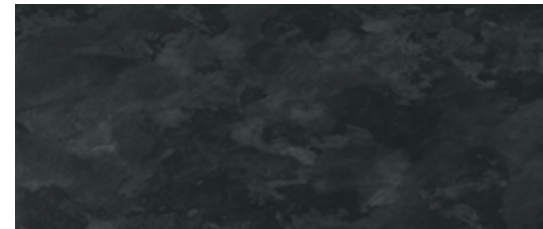
5575 • Black Marmor (Satin)



5577 • Houston (Suede)



5578 • Madison (Suede)



5773 • Neptunite (Terra)



5774 • Antico (Terra)



5331 • Midnight Acacia (Essentia)



9851 • White X (AFX)



5758 • Artisan Oak (Essentia)



9853 • Anthracite (AFX)

AFX

*The above swatches are only for representation purpose. Due to printing limitation actual product may vary. Please refer physical sample for color & texture. †All décors available in all the formats

TECHNICAL SPECIFICATIONS

S. No.	Properties	Unit	Test method as per EN 438 Part 2 & 4: 2016	Specified values	Typical Results Greenlam
	Nominal Thickness	mm		12mm	
1	Classification		EN 438-4 - 4	Compact General purpose standard, CGS	
2	Thickness	mm	EN 438-2 - 5	12.0 ± 0.50	complies
3	Resistance to Dry Heat at 160° C	Rating	EN 438-2 - 16	Not worse than 4	5
4	Length & Width	mm	EN 438-2 - 6	+10mm / - Nil	complies
5	Resistance to Surface Wear (Initial Point)	Rev.	EN 438-2 - 10	150 (min.)	complies
6	Resistance to Immersion in Boiling Water (2 hours)		EN 438-2 - 12		
	Mass Increase	%		2.0 (max.)	0.24
	Thickness Increase	%		2.0 (max.)	0.68
7	Dimensional Stability at Elevated Temperature		EN 438-2 - 17		
		Longitudinal Direction		%	0.30 (max.)
	Transverse Direction	%		0.60 (max.)	0.15
8	Resistance to Impact by Small Diameter Ball	N	EN 438-2 -10	Not applicable	
9	Resistance to Impact by Large Diameter Ball				
	Drop Height	mm	EN 438-2 -21	1800	1900
	Diameter of Indentation	mm		10 (max.)	7
10	Resistance to Scratching	N	EN 438-2 -25	2.0 (min.)	2.5
11	Resistance to Staining		EN 438-2 -26		
	Group 1 & 2	Rating		5	5
	Group 3			4	≥ 4
12	Resistance to Wet Heat @100°C	Rating	EN 438-2 - 16	Not worse than 4	5
13	Light fastness (Xenon Arc Lamp) - Grey Scale Contrast	Rating	EN 438-2 -27	4 to 5	Complies
14	Resistance to Crazeing	Rating	EN 438-2 -24	Not worse than 4	5
15	Flexural Modulus	Mpa	EN ISO 178:2003	9000 (min.)	Complies
16	Flexural Strength	Mpa	EN ISO 178:2003	80 (min.)	Complies
17	Density	g/cm3	EN ISO 1183 - 1:2004	1.35	1.38

Note: Whereas Greenlam products are manufactured thoroughly to standards, the nature of the application procedure is beyond our control. The values given above are to the best of knowledge but without liability/warranty, expressed or implied.



Safe and Healthy Living alongside Greenlam Products

The entire range incorporates Safeguard Plus™, a revolutionary development that retards the growth of the vast majority of common bacteria. This means our products are ideal for laboratories, kindergartens, offices and domestic environments.



GREENGUARD Certification Program

GREENLAM® laminates are classified under the Low Emitting Product category when measured for potentially harmful emissions. This is an assurance that our products are ideal for use in interior environments where air quality is vitally important.



GREENGUARD Gold Certification

This certification, with a stricter criteria, means that GREENLAM® products are suitable for use in environments where children spend significant periods of time, including schools, daycares and healthcare facilities.



GREENLAM® products have been awarded CE certification which is given to those manufacturers who declare that the product complies with the essential requirements of the relevant European health, safety and environmental protection legislation, in practice by many Product Directives. CE Marking on a product indicates to government officials that the product may be legally placed in the market in their country.



All GREENLAM® Laminates are certified by the prestigious American body, NSF International, making them the safest laminates for human health. Our surfaces can be used in situations where they will have direct contact with food. "Our surfaces have also been tested in accordance with EC directive 1935 with regards to food safety. Our products were proved fully compliant through testing to the demanding EU Food Commission Regulation 10/2011 with successful testing to BSEN 1186-1:2002, BSEN 1186-3:2002 & BSEN 1186-14:2002".



GREENLAM® products are tested in accordance to BS EN 438 - 2 and strictly conforms to all the testing standards for dimensional stability and performance levels such as boiling water, moisture, impact, scratches and stain resistance.




APPROVED BY THE WORLD





Registered Office:
3 Brindley Place, Birmingham,
England, B1 2JB.
E: info.uk@greenlam.com
W: www.greenlam.com

Global Headquarters:
Greenlam Industries Limited
1501 – 1505 Narain Manzil,
23, Barakhamba Road,
New Delhi – 110001, India.
T: +91 11 42791399
E: info@greenlam.com
W: www.greenlam.com

 [/greenamlaminate](https://www.facebook.com/greenamlaminate)
 [/greenlam01](https://twitter.com/greenlam01)
 [/greenlam_laminates/](https://www.instagram.com/greenlam_laminates/)
 [/greenlamindustries](https://www.youtube.com/greenlamindustries)